

# Glasovna raščlamba

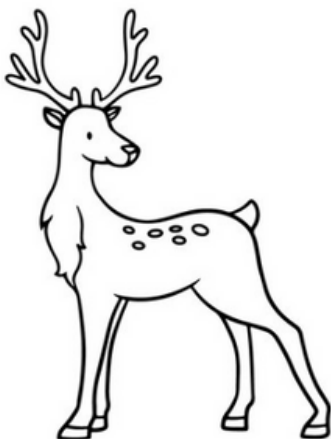
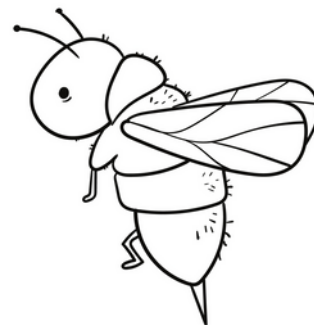
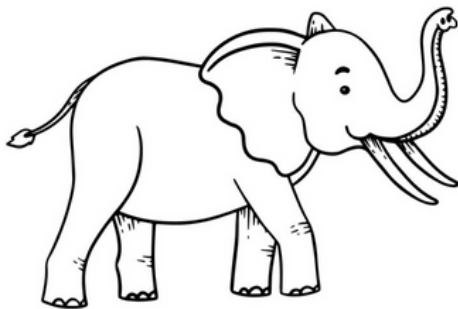
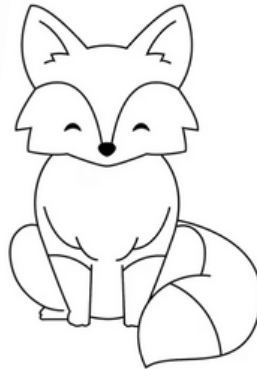
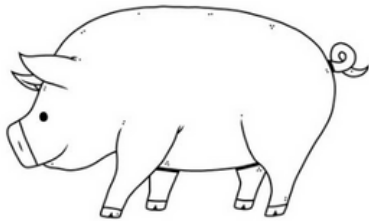
Gdje se nalazi glas S u pojmovima sa slika?

Oboji životinje s glasom S:

na početku - plavom bojom

u sredini - crvenom bojom

na kraju - žutom bojom

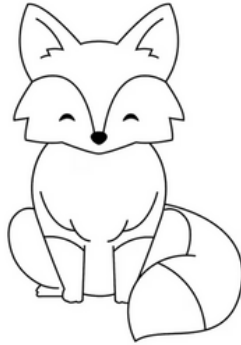


# Glasovna raščlamba

Imenuj životinje. Prebroji koliko svaka od njih ima glasova. Za svaki glas oboji po jedan kružić.



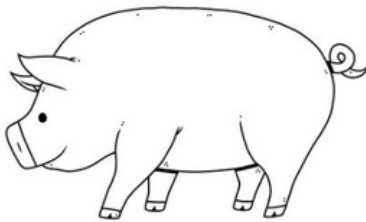
○○○○○○○○



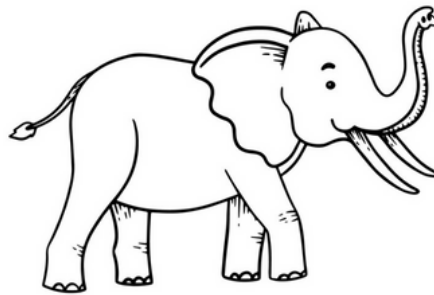
○○○○○○○○



○○○○○○○○



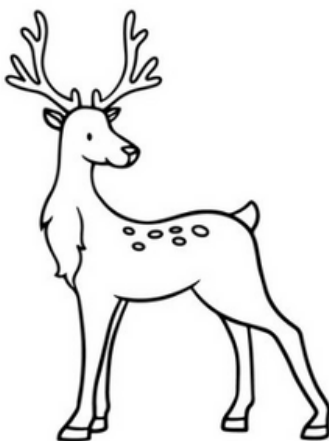
○○○○○○○○



○○○○○○○○



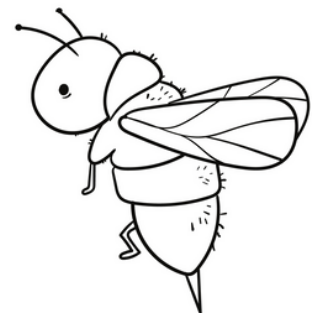
○○○○○○○○



○○○○○○○○



○○○○○○○○



○○○○○○○○



○○○○○○○○